

# Cross & Keys

Easter 2024 – Newsletter of  
Saint Peter's Church



**Anglican**  
Church  
Saint Peter's East Maitland

The Anglican Parish of East Maitland  
**Saint Peter's Church**  
49 William Street East Maitland



Serving the Communities of Ashtonfield,  
East Maitland, Four Mile Creek, Louth Park, Metford, Pitnacree, Tenambit and the Hunter Region

Telephone: (02) 4934 5303 | email: [office@eastmaitlandanglican.org](mailto:office@eastmaitlandanglican.org) | website: [www.eastmaitlandanglican.org](http://www.eastmaitlandanglican.org) | mailing: PO Box East Maitland NSW 2323

## Scott's Spot



This year it has been interesting to note that in many churches across different denominations and traditions there has been a scaling back, to a degree, of Holy Week and Easter observances. There are a number of factors which may have contributed to this. The ongoing war in Ukraine; the recent events in Israel and Gaza and the ongoing conflict there, along with the reaction to that conflict within our own country. Couple that with the stark reality of increasing cost-of-living pressures being experienced by so many people in our community, it's no wonder things have not been quite as they might once have been. All that considered it was also interesting to note that attendance at Easter services remained steady or in some cases was slightly higher than last year. This was certainly true for us here at St Peter's.

Perhaps this is not surprising. It is often the case that when we are feeling unsettled or disturbed, we look for reassurance in things that are known and familiar. The church generally and the story of Easter more specifically are constants in many people's lives and can be a source of comfort in difficult and unsettled times.

We are able to resonate deeply, even today, with the core message of Easter. The pattern of life, death, entombment and new life is something that we know and experience in many and varied ways in our own lives. Just think of our gardens, as an example. Easter affords us the opportunity to see our own small stories in the light of the larger story of the universe as understood by the Christian church. Easter reminds us of a broader context which we can live our life within. Our small story is seen as a part of God's big story!

This Easter we have once again been reminded of the powerfully loving action of God in reconciling all of creation, including us, to himself. We have been reminded of the hope of new life which is the promise realised in Christ's resurrection. The new light which is so needed in our world today has once again shone on us and now can shine through us. In this continuing season of Easter, as we reflect together on the post-resurrection stories of Jesus and those earliest disciples we can find connections between those stories and our own story. And there is reassurance in the knowledge that we are not alone in experiencing disturbing and unsettling times. As we follow the story we see our hope and perhaps even recognise our part to play.

I pray that you may know God's richest blessing this Easter season.  
Your Priest and brother in Christ.

**Scott**

If you are a user of Facebook please like and share our pages:

- East Maitland Anglican
- Op Shop St Peter's East Maitland



Parish Office hours are as follows;

- **Tuesday 9am – 1pm**
- **Thursday 9am – 1pm**
- **Friday 9am – 1pm**



Outside of these hours messages can be left phone (4934 5303) and will be responded to as promptly as possible during opening hours.

# St Peter's Parish Hall

## History Uncovered: A Fresh Appraisal

A historical enigma in East Maitland which for half a century has confounded historians has been solved.

It has now been established that St Peter's Parish Hall, a historic brick building fronting Banks Street, East Maitland, was built in 1867-68 as a denominational school, i.e., a primary school conducted by the Church of England pursuant to the Public Schools Act of 1866, and was used as such for 14 years.

It was built to replace an old and dilapidated School House whose location on Stockade Hill had proven inconvenient.

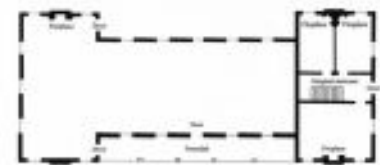
Previous theories which dated the building at 1829, or around 1840, have been shown to be erroneous.

A number of clues led to the discovery of historical letters in the NSW State Archives which prove that the building now used as a Parish Hall was built as a denominational school in 1867-68. The reason why the letters existed at all was to justify a grant of £400 of public money towards the anticipated cost of £1200 for building the school.



*Elevation and plan of St Peter's denominational school, East Maitland, with master's residence and attic rooms overlaid facing Banks Street*

From 1848 education in New South Wales had operated on a dual system, under which each major religious denomination conducted essentially its own education department, in competition with public (national) schools run by the National School Board. Churches had long jealously regarded the education of their youngest members as their own responsibility, and not the role of the State. From 1848 to 1882 the Churches fought a gradually losing battle against the withdrawal of State aid for denominational schools.



At one end of the school building, facing Banks Street, was a residence for the school master and his family, comprising three rooms on the ground floor and three attic rooms above. Behind and adjoining the residence was a large school-room. The roof was originally shingled, and to this day the shingles remain underneath the galvanised iron roof.

When State aid for denominational schools ceased on 31 December 1882, many of them closed, including this one; their place being taken by an expansion of the existing public schools.

Yet within a short time, the former denominational school (now St Peter's Parish Hall) was put to use for another public purpose. The administration of Crown lands in New South Wales was reformed and decentralised under the Crown Lands Act of 1884, which made necessary the opening of Land Board Offices in regional centres. From 1885, and for the next 12 years, a temporary Land Board Office was located in St Peter's Parish Hall, administering a vast area from Port Macquarie to Gosford; and the parish hall was given over to a large staff of board members, surveyors, clerks and draftsmen. Eventually the Lands Department built a permanent office in Newcastle Road, East Maitland, opened in 1897.

In later years the Parish Hall was used for Sunday School classes and for many other Church-related purposes including meetings, dances, and countless social and cultural activities. During the 1939-45 war it served as a First Aid post for the National Emergency Services (air raid wardens), in which role it was the venue for an official visit in 1942 by the Governor, Lord Wakehurst.

Later still it served as an evacuation and relief centre in times of flood. During the flood of February 1955, an estimated 1500 hot meals were being served daily in the parish hall for victims and rescuers, including surf boat crews.

**Jim Waddell**

*Jim has written about this in more detail for the Maitland District Historical Society, if you would like to know more please contact the Society or speak to Fr Scott or John Waddell.*

# ST PETER'S EASTER 2024



## Shrove Tuesday 13<sup>th</sup> February



Shrove Tuesday (also known as Pancake Day) is the day immediately preceding Ash Wednesday, the first day of Lent. This moveable feast is determined by the Easter calendar.

The expression "Shrove Tuesday" comes from the word *shrive*, meaning "absolve". Shrove Tuesday is observed by many Christians who make a special point of self-examination, of considering what wrongs they need to repent, and what amendments of life or areas of spiritual growth they especially need to ask God's help in dealing with.



Our St Peter's family gathered for the ritual

and to prayerfully consider the upcoming season. They also shared pancakes and other sweets as is the tradition.



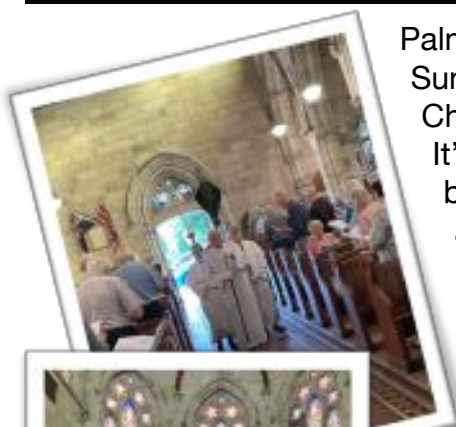
*Fr. Scott burns last year's palm crosses for the Ash Wednesday service*

## Palm Sunday 24<sup>th</sup> March

Palm Sunday is our feast that falls on the Sunday before Easter to commemorate Christ's triumphal entry into Jerusalem. It's name originates from the palm branches waved by the crowd to greet and honour Jesus Christ as he entered the city.

Palm Sunday marks the first day of Holy Week, the beginning of the last week of the season of Lent.

Thanks to all those who collected and trimmed palm fronds, framed the entryway and the altar, filled vases and made palm crosses which so beautifully adorned our magnificent St Peter's.





## Good Friday 29<sup>th</sup> March

Our congregation commemorated what we believe to be the most momentous weekend in the history of the world. Ever since Jesus died and was raised, we have proclaimed the cross and resurrection of Jesus to be the decisive turning point for all creation.

St Paul considered it "of first importance" that Jesus died for our sins, was buried, and was raised to life on the third day, following what God had promised in the Scriptures;

***"for what I received I passed on to you as of first importance; that Christ died for our sins according to the Scriptures, that He was buried, that He was raised on the third day according to the Scriptures"***  
*(1 Corinthians 15:3-4)*



On Good Friday, we remember the day Jesus willingly

suffered and died by crucifixion as the ultimate sacrifice for our sins. The spirit was felt all who attended this solemn service.

## Easter Day 31<sup>st</sup> March

The glorious celebration day Jesus was raised from the dead, heralding his victory over sin and death and pointing ahead to a future resurrection for all who are united to him by faith (*Romans 6:5*).

The St Peter's congregation gathered at dawn and again at 8.30am for a morning of fellowship, hot cross buns and easter eggs.



# Men's Breakfast 9th March

Rumour has it you can find the best breakfast in Maitland at St Peter's every second Saturday of every second month 8am-10am as our parish gentlemen gather for fellowship and a feast!

If you would like to join us, here are the next dates ► **11<sup>th</sup> May, 13<sup>th</sup> July, 14<sup>th</sup> September, 9<sup>th</sup> November**



## Wendy is 70!

Wendy celebrated a big milestone on 27<sup>th</sup> February and all of her St Peter's family were more than happy to help her party through a week-long festival of cake, lunches and friendship.

Congratulations Wendy, everyone was delighted to be a part of this wonderful occasion with you. May there be many more and may you stay as young and as energetic!

If you are anything to go by, 70 is the new 50!



With winter almost upon us the Op Shop is looking for donations of warm bedding, blankets and doonas to help our local community with clean, affordable manchester.



If you are able to assist please contact the Op Shop during trading hours, Wednesday, Thursday and Saturday 9am-1pm and Friday 9am-3pm.

# The Inaugural 'Margie Cup'

A poignant moment occurred at Maitland Hockey Centre on Sunday last (7<sup>th</sup> April).



University Hockey Club's Pat Dunkin, Fr Wilf and Judy Redden, Maitland Club's Emile Noronha and Brett Plain

Fr Wilf and Judy Redden presented the "**Margie Cup**" to 6<sup>th</sup> Grade University and Maitland RAMS players, respectively Pat Dunkin and Emile Noronha.

The "**Margie Cup**" is played in memory of Margie Plain, wife of founding club member Brett "Potsy" Plain. The Margie Cup is awarded to the best on ground in games between Maitland and University's 6th Grade teams.

As well as being Brett's wife, Margie was also the daughter of Fr Wilf and Judy.

It was an emotional time for both Fr Wilf and Judy who appreciated the opportunity to participate in this most fitting memorial to their much-loved daughter. Incidentally, and almost as an aside, the score between the two sides was 2-2, a fitting result to a memorable afternoon.

**Kevin Short**

## Annual General Meeting Sunday 24<sup>th</sup> March

Our AGM was held on Palm Sunday in the Church and was very well attended by many of the congregation interested in Fr Scott's reflection and gratitude for last year and for his vision of the year ahead.

The new Parish Council and Church leaders were elected. Say hello and wish them well if you see them around!

C  
H  
U  
R  
C  
H  
W  
A  
R  
D  
E  
N  
S

### SYNOD REPRESENTATIVES AND COUNCILLORS



Kerry Priestley



Kevin Short



Kerry Bruce



Bill Griffiths

### MISSION SECRETARY AND RECTOR'S CHURCHWARDEN



Graham Webb

### PARISH ADMINISTRATOR SAFE MINISTRY OFFICER



Christine Simpson-Morgan

### PARISH COUNCILLORS



Geoff Newby



Carmel Newby



David Burton



Rita Lewis



Wendy Cannon



Richard Fellows



Adam Draper



# Hall Hire

Our Parish Hall is available to hire for community or family events and functions.

We currently host a number of local groups running weekly **Yoga, Belly Dancing and Tai Chi** classes.

Welcome to our newest group, the **U3A Garden Class**, we look forward to hosting you again soon.

If you would like to hire the Hall, please contact the Parish Office.



## Saint Peter's Columbarium

Many of our friends and loved ones rest in the columbarium niches and memorial garden.



We invite all members of our local community to consider our columbarium as the final resting place for their cremated remains, where family members and descendants can visit.

For further details about purchasing a columbarium niche please contact the Parish Office.



Please pray for the souls of all those who have died since our last edition and their lives celebrated at St. Peter's

Coral GALAGHER  
Russell COOPER  
Frank HALLIDAY  
Albert TONGA  
Alma RICHARDS  
John WINTER

May they rest in peace and rise with Christ in glory.

## Regular Giving

The preferred way of receiving peoples offering to support the ministry and mission of the Parish is by electronic bank transfer.

Would you be willing to give your regular offering electronically?



The Parish Council is asking all those who regularly give to the life of the Parish to consider doing so electronically. Giving regularly by bank transfer is simple to set up and saves having to remember your giving envelopes each week. It also reduces security risks on the church site.

There are two ways to set this up:

- ★ If you have access to the internet and already use electronic banking for other payments you can set this up from within your bank's website;
- ★ If not, you can visit your local bank branch and ask the staff to arrange it for you.

The Parish's bank details are:  
Saint Peter's Anglican Church  
BSB: 705-077,

Account Number: 00040464 Reference: St Peter's Giving.

It is important for you to know that your giving will remain confidential. Christine Simpson-Morgan our Treasurer is available to help you. Please contact Christine at [office@eastmaitlandanglican.org](mailto:office@eastmaitlandanglican.org) or on 4934 5303 if you would like to discuss this confidentially.

## Memorial Flowers

Throughout the year we remember our loved ones on the anniversary of their death. Each year families remember loved ones who have died by dedicating memorial flowers in the church on the weekend in which they are included in our prayers.

This is a lovely way to remember loved ones and to help Saint Peter's maintain a supply of fresh flowers throughout the church.

The cost of flowers is determined by the family making the donation, however as an indication this is usually in the order of \$150 - \$200.

If you would like to organise memorial flowers for a loved one, please contact the Parish Office on 4934 5303



## Parish Office Hours

- Tuesday 9am – 1pm
- Thursday 9am – 1pm
- Friday 9am – 1pm

Messages can be left on the Parish Office Phone (4934 5303) outside of hours and will be responded to as promptly as possible during opening.